

1.0 Computer Software Setup

1.1 Computer System Requirement

- IBM PC or Compatible, 386 speed processor or better
- CD-ROM, DVD-ROM, CD-R or MultiRead CD Drive
- 8 MB RAM minimum, 16 MB recommended
- Windows 95, 98 or newer or Windows NT 4.0 or newer
- 8 MB available hard disk space

****NOTE:** If you do not have a CD drive on the target computer system, a self installing file is available for downloading from the world wide web. Contact your distributor for the current web site address.

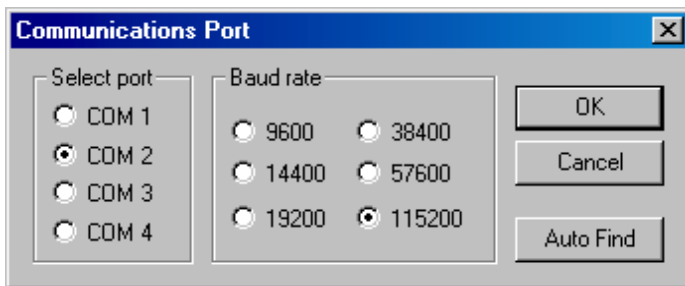
The DL-1 system is capable of collecting large amounts of data and presenting the information graphically. Because of this, we recommend that you install the Tinker & Rasor **TRAC** Configuration and Analysis software on a PC with a fast microprocessor (200MHz or faster) and at least 16MB of memory (RAM). *For information about using the DL-1 with handheld computers, please see separate PDA User Manual or contact Tinker & Rasor. Telephone: 626-287-5259*

1.2 Software Installation

Insert the installation disk in the appropriate disk drive.

1. The CD installation will begin automatically. If the installation program does not open, select *Run* from the Start menu and type in or *Browse to D:\Autorun\autorun.exe*, where *D:* is your CD drive.
2. Double click the TRAC Setup icon in the installation window.
3. Follow the on-screen instructions.
4. To begin, select the **Tinker & Rasor TRAC** program from the Start | Programs menu, or double-click on the *trac.exe* file from Windows Explorer in the directory where you installed the program (default directory – C:\Program Files\Tinker and Rasor\trac.exe)

1.3 Communication Setup



From the Communication pull-down menu, select *Setup* to setup or change the communications port selection for the PC. At left is the dialog box that appears. Select the correct COM port or use Auto Find. Auto Find will find the correct port if the logging unit is in the “Off” mode, and is connected to an available COM port on your computer. This will only need to be done once, unless the PC’s hardware is changed or a different PC is used.

Most commonly, COM1 or COM2 is used. For notebook computers, almost always COM1 is used, but on some older computer models COM1 is used by the Mouse, so you would then use COM2. Rarely is COM3 or COM4 used. A confirmation window appears when Auto Find locates the data logger. Click OK. Click OK again to close the Communications Port window.

A 9-pin communications cable (null modem cable, included. Please see **Appendix B: Recording and Data Transfer Connections**) is used to connect the DL-1 to the host computer.